





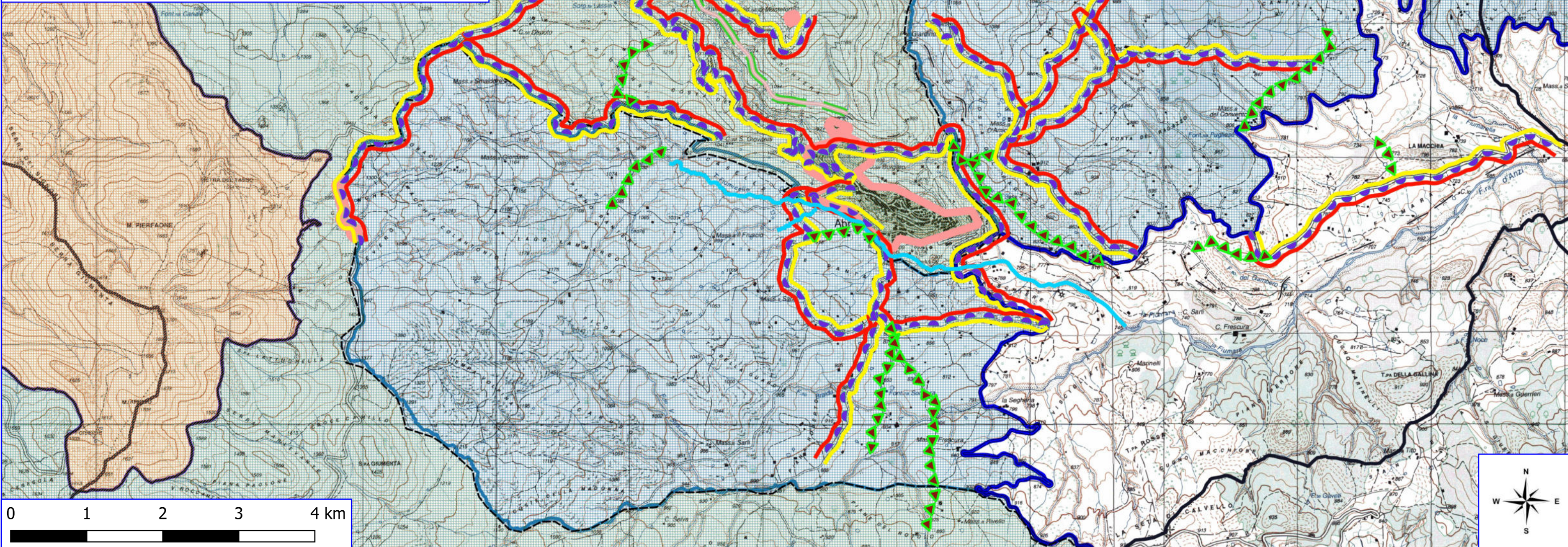


Legenda

PROGETTO FORESTAZIONE PUBBLICA 2026 ABRIOLA

-  AREA PARCO
-  AREA SIC
-  AREA ZPS
-  AREA ZSC
-  BENI PAESAGGISTICI ART. 136
-  BENI PAESAGGISTICI ART. 142
-  LIMITI COMUNALI
-  PISTA CICLABILE
-  SENTIERI FORESTALI
-  DECESPUGLIAMENTO ASTE FLUVIALI
-  PULIZIA CUNETTE
-  DECESPUGLIAMENTO SCARPATE STRADALI
-  MANUTENZIONE VERDE PUBBLICO

IGM_25000

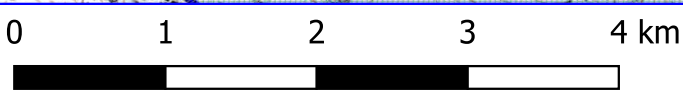
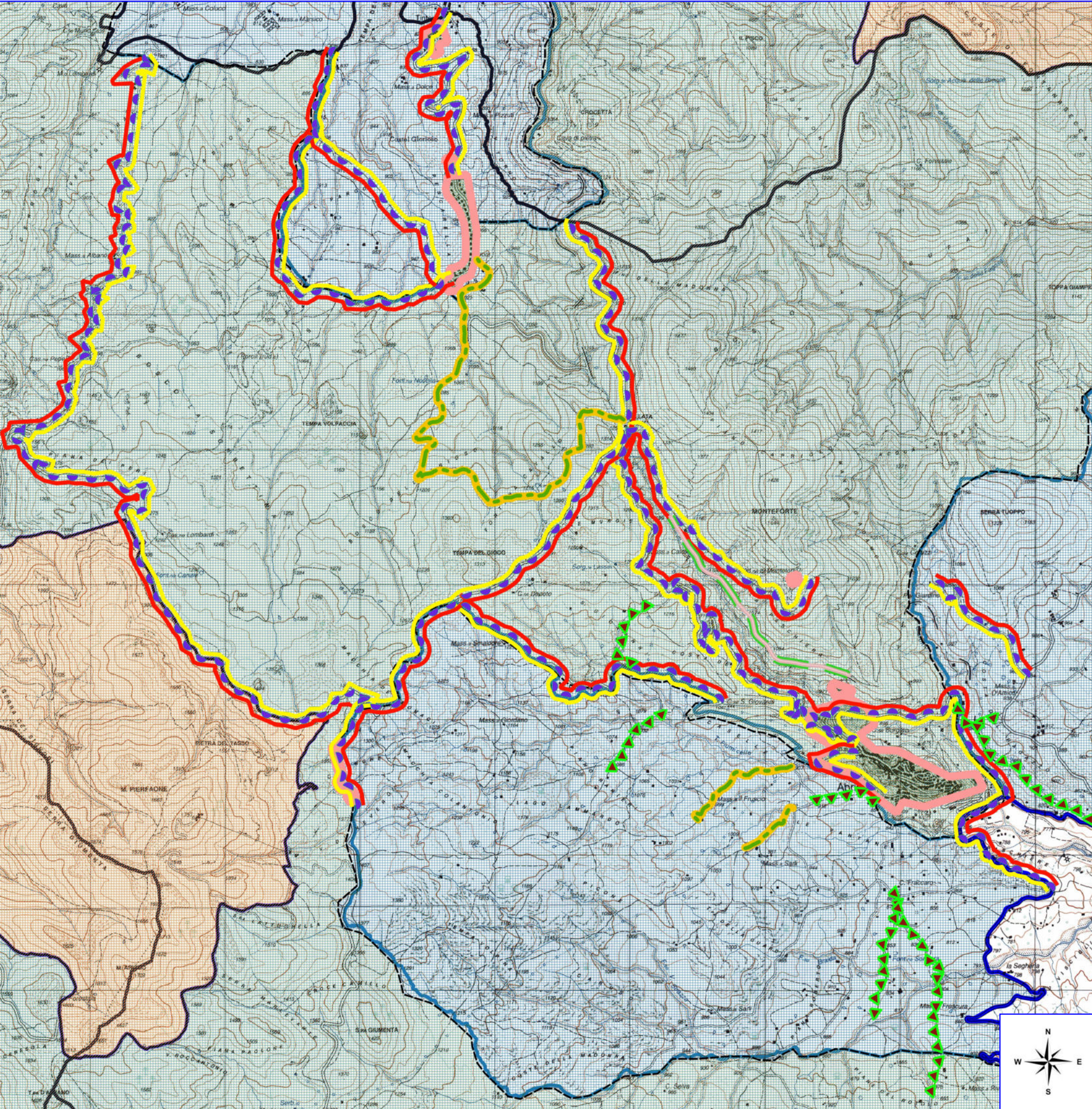


Legenda

PROGETTO FORESTAZIONE PUBBLICA 2026 ABRIOLA




-  AREA PARCO
-  AREA SIC
-  AREA ZPS
-  AREA ZSC
-  BENI PAESAGGISTICI ART. 136
-  BENI PAESAGGISTICI ART. 142
-  LIMITI COMUNALI
-  VIALI TAGLIAFUOCO
-  PISTA CICLABILE
-  SENTIERI FORESTALI
-  PULIZIA CUNETTE
-  DECESPUGLIAMENTO SCARPATE STRADALI
-  MANUTENZIONE VERDE PUBBLICO

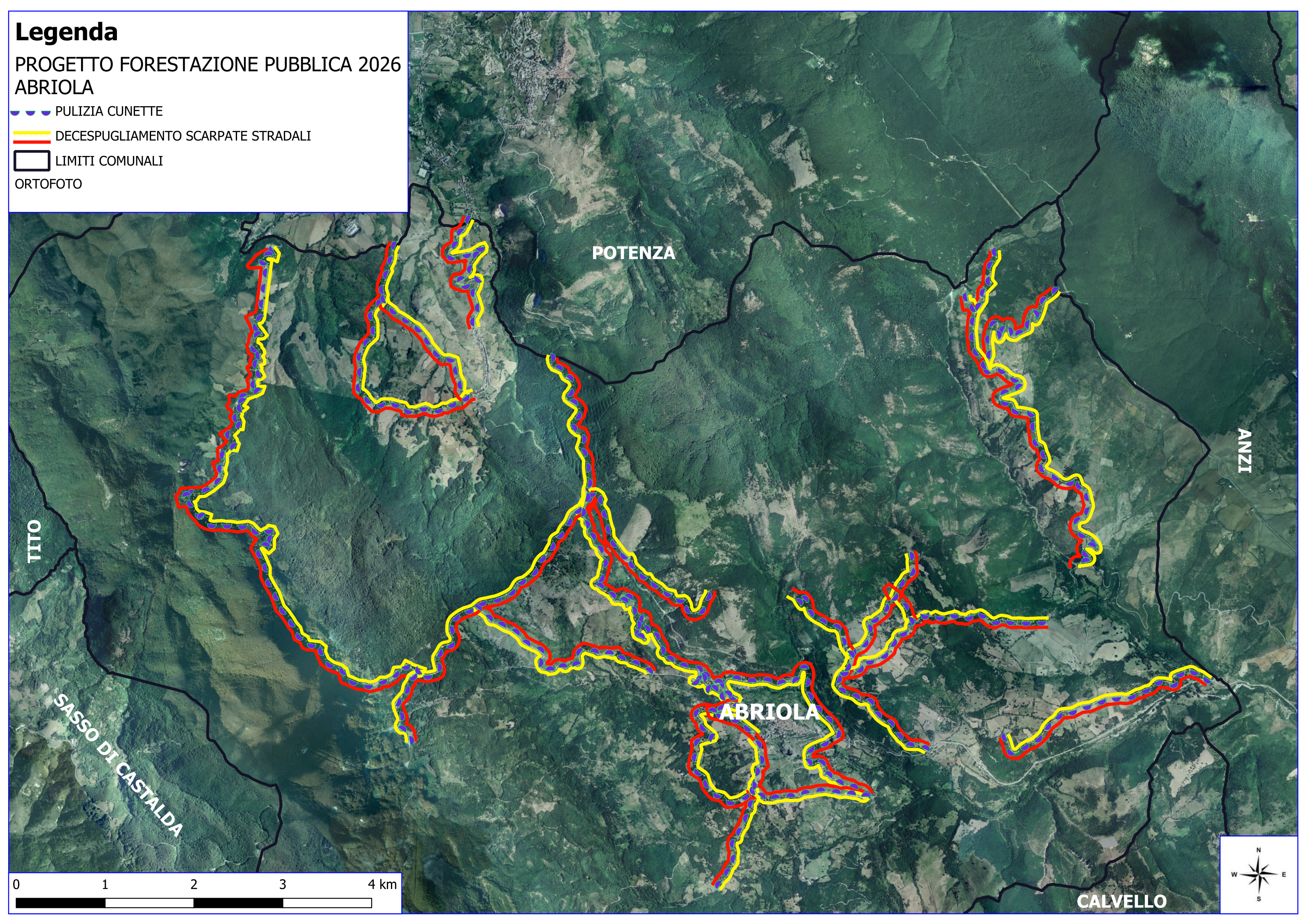
IGM_25000



Legenda

PROGETTO FORESTAZIONE PUBBLICA 2026 ABRIOLA

-  PULIZIA CUNETTE
-  DECESPUGLIAMENTO SCARPATE STRADALI
-  LIMITI COMUNALI
- ORTOFOTO



POTENZA

ANZI

TITO

SASSO DI CASTALDA

ABRIOLA

CALVELLO

