











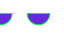

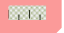
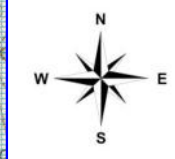
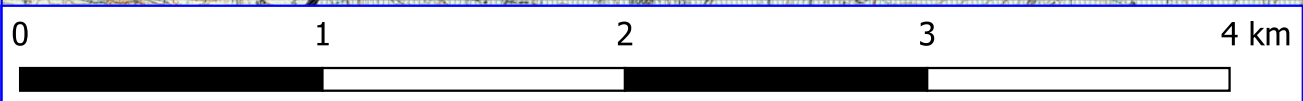
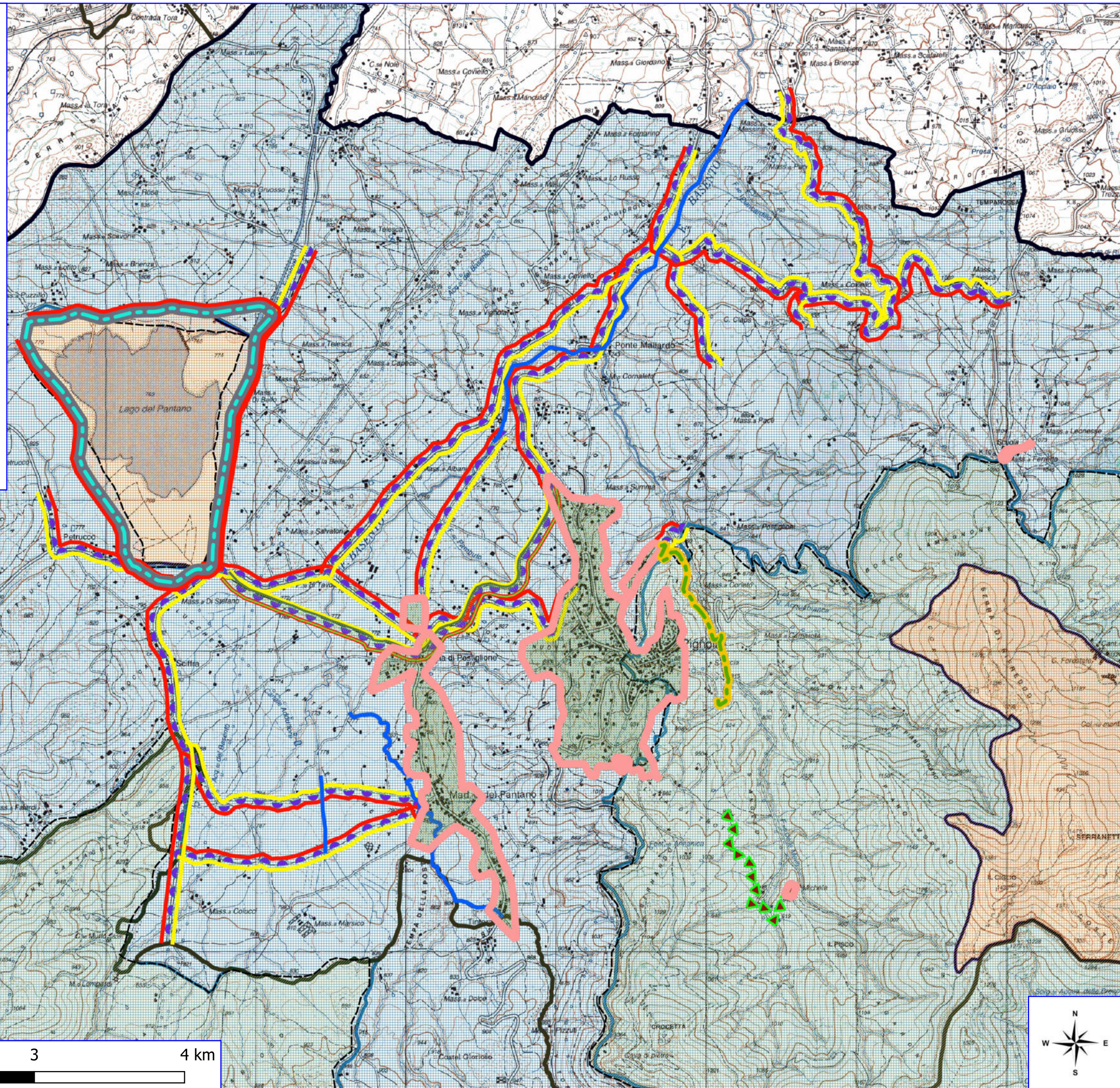


# PROGETTO FORESTAZIONE PUBBLICA POA 2026 PIGNOLA

-  AREA PARCO
-  AREA SIC
-  AREA ZPS
-  AREA ZSC
-  BENI PAESAGGISTICI ART. 136
-  BENI PAESAGGISTICI ART. 142
-  LIMITI COMUNALI
-  MANUTENZIONE VIALE TAGLIAFUOCO
-  MANUTENZIONE PISTA FORESTALE
-  MANUTENZIONE STRADA FORESTALE
-  MANUTENZIONE PISTA CICLOPEDONALE
-  MANUTENZIONE RETICOLO IDROGRAFICO
-  PULIZIA CUNETTE
-  DECESPUGLIAMENTO SCARPATE STRADALI
-  MANUTENZIONE VERDE PUBBLICO

IGM\_25000



PROGETTO FORESTAZIONE PUBBLICA POA 2026

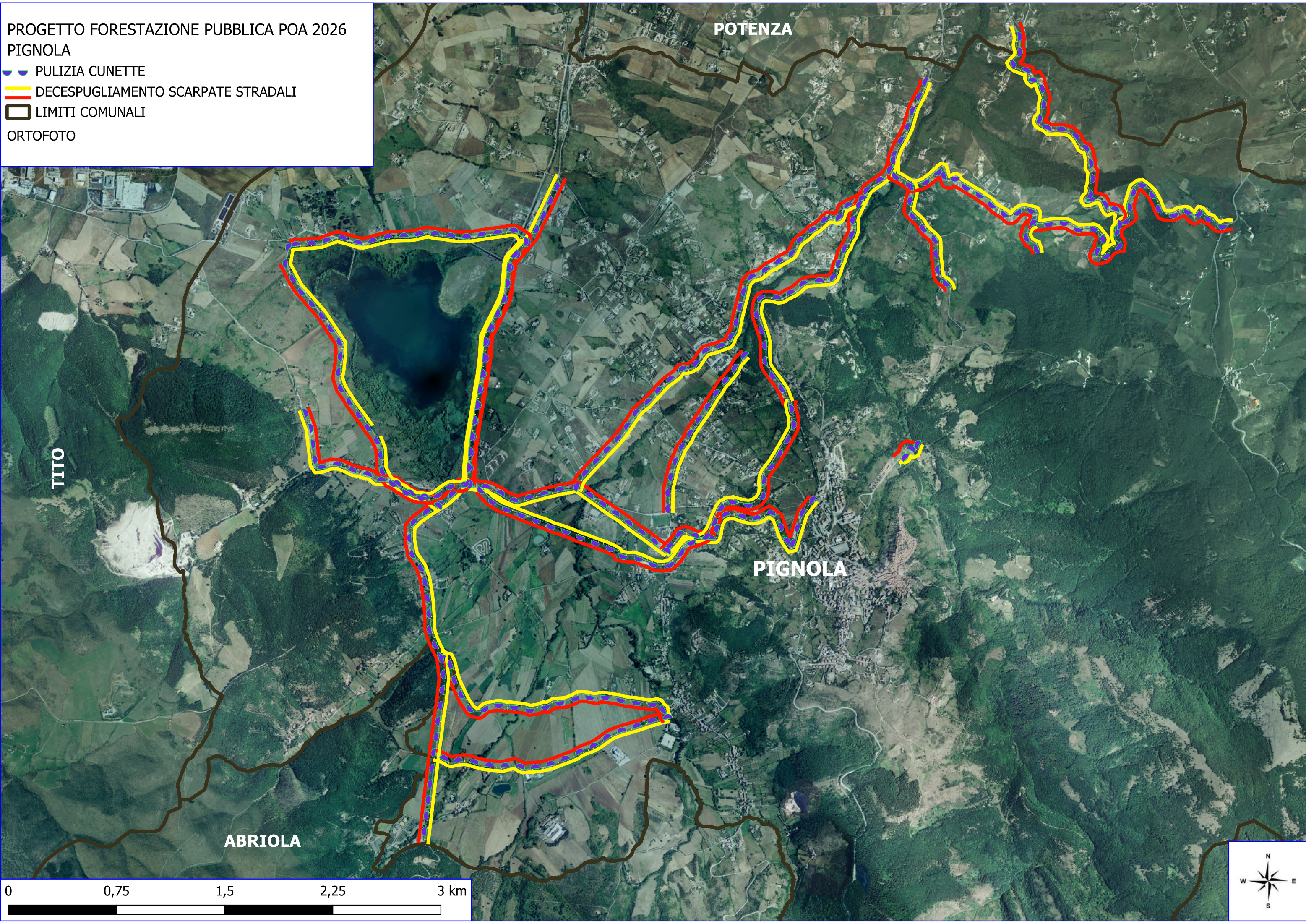
PIGNOLA

 PULIZIA CUNETTE

 DECESPUGLIAMENTO SCARPATE STRADALI

 LIMITI COMUNALI

ORTOFOTO



POTENZA

TITO

PIGNOLA

ABRIOLA

